

MRF TURE

Winter 2023

The Quarterly Newsletter of the Manitowoc County Recycling Center & Compost Sites



IN THIS ISSUE

- LAMP RECYCLING 1
- TELEVISION & MONITOR RECYCLING 2
- CHRISTMAS LIGHTS 3
- HOLIDAY TREE COMPOSTING 3
- TREE FOR A TREE PROGRAM 3
- NO LOGS OR STUMPS 4
- DRUG COLLECTION RESULTS 5
- RECYCLING DEPOT GUIDELINES 6
- ELECTRONIC NEWSLETTER REQUEST 6
- SCRAP METAL DUMPSTER 6

LAMP RECYCLING is one of the services provided by the Manitowoc County Recycling Center's ongoing electronics collection program. Some lamps, including fluorescent tubes, compact fluorescent bulbs and high intensity discharge bulbs, contain small amounts of mercury that can be harmful to human health and the environment when they are disposed of in the trash. Even incandescent bulbs contain lead, which is also a toxic metal. All the materials in these bulbs can be recycled. During 2021 the Recycling Center collected approximately 13,146 bulbs from residents and businesses. Once received, the bulbs are carefully packaged for shipping to a specialized recycling facility where hazardous materials are safely removed. All the materials in these bulbs can be recycled without generating any waste. Even the hazardous materials, like mercury, can be recovered.



All the lamps we receive are handled as Universal Waste. This is a regulatory category of waste that helps avoid some of the strict requirements of hazardous waste handling. It is designed for certain common items, like light bulbs, batteries, and thermostats, that contain hazardous substances and are destined for recycling.

Bring your burnt out lamps and ballasts to main office at the Manitowoc County Recycling Center. When transporting large amounts of fluorescent tubes secure them in boxes or by taping them together in manageable bundles using an easy release masking or painter's tape (no duct tape).

Item	Fee
4 ft. Fluorescent Lamps	\$0.45 each
8 ft. Fluorescent Lamps	\$0.55 each
Compact Fluorescent Lamps	\$0.45 each
High Intensity Discharge (HID) Lamps (Including Sodium, Metal Halides, & Mercury Vapor)*	\$1.40 each
Incandescent, Flood and Spot Light Lamps	\$0.35 each
LED Lamps	\$2.80 each
Fluorescent light fixtures (without bulbs)	\$9.00 each
Holiday lights (string lights only, no lighted decorations)	No charge
Ballasts (non-PCB)	\$0.55 per lb
Ballasts (PCB)	\$1.00 per lb

*There may be an additional charge for any broken lamps.
 **Do not use duct tape to bundle fluorescent lamps together, use an easy-release tape like painter's tape or masking tape.

Mission Statement
 To provide materials recycling and recovery services to the citizens of Manitowoc County and to keep the public informed about recycling issues.



Manitowoc County Recycling Center & Compost Sites
 3000 Basswood Road, Manitowoc WI
 920-683-4333
Recycling.manitowocountywi.gov



TELEVISION AND MONITOR RECYCLING

The Manitowoc County Recycling Center recycles unwanted televisions and monitors. Fees range from \$10 to \$35 depending on the type and size. Bring your unwanted electronics to our main office M-F between 7a and 4p.

All TVs/monitors are measured diagonally across the viewing area.

- LCD/LED TV or Monitor less than 27 inches - \$10.00 each
- Plasma/LCD/LED TV 27 inches or more - \$20.00 each
- CRT TVs 24 inches or smaller - \$15.00 each
- CRT TVs greater than 24 inches and up to 36 inches - \$25.00 each
- CRT and Projection TVs greater than 36 inches - \$35.00 each

Our complete rates and guidelines are online at <https://manitowocountywi.gov/.../electronics-collection/>

Please do not purposefully break or disassemble your old TVs. This makes them hard to handle safely and can raise costs.

TV tubes contain a significant amount of lead, and can create a health risk when broken and handled improperly. Young children are especially at risk from lead exposure.

Our electronics collection program is registered with the Wisconsin DNR E-Cycle program and all the electronics we accept are sent to companies that are registered to recycle electronics. This helps to ensure environmentally safe practices are used, worker protections are followed, and sensitive data is properly destroyed.



E-CYCLE WISCONSIN

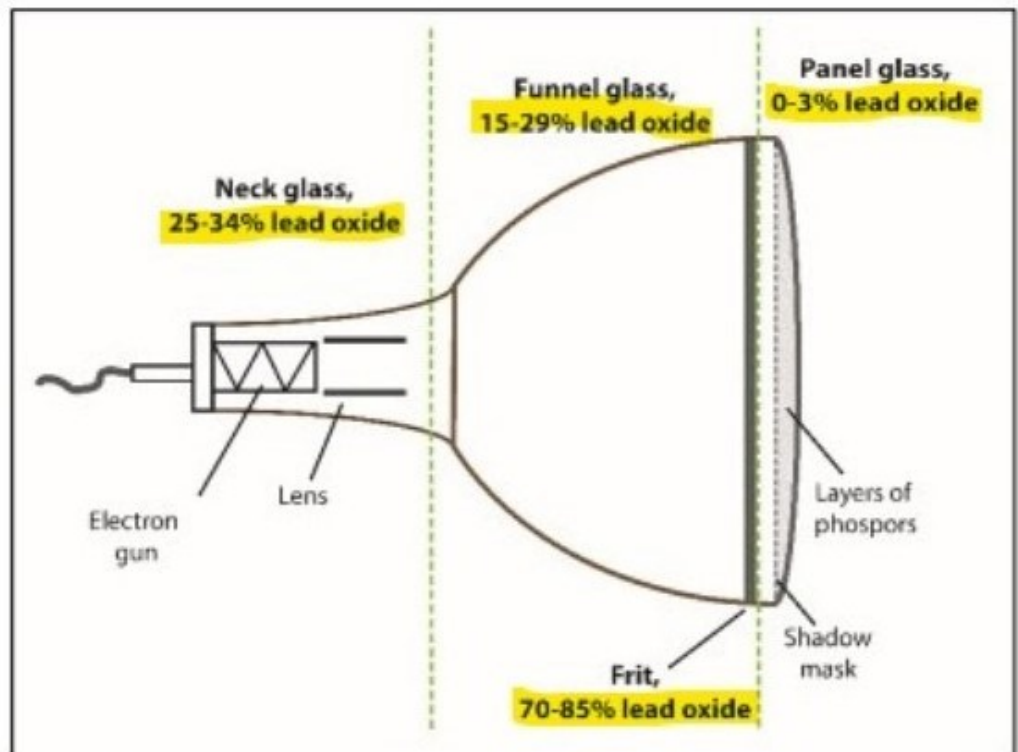


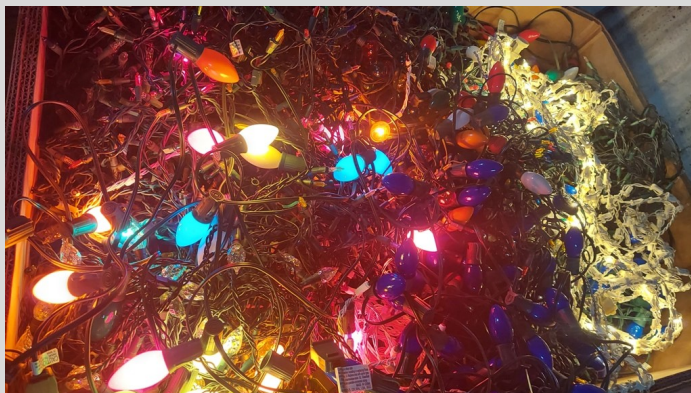
Figure 1: Cathode ray tube components and lead oxide content

CHRISTMAS LIGHTS

Bring your unwanted Christmas lights to the Manitowoc County Recycling Center. Strings of lights are recyclable, even with the bulbs in them. There is no charge to recycle strings of lights or any other electrical cords. Bring them to the Recycling Center Main Office at 3000 Basswood Road Monday-Friday between 7am and 4pm.

All string lights will be accepted as well as extension cords. Garland, wreaths, trees and other lighted decorations will not be accepted. Normal light bulbs, including spot lights, compact fluorescents, fluorescent tubes, and incandescent bulbs can be recycled but normal fees apply.

This is a popular service. Since we started collecting string lights in 2015, approximately 6500 pounds have been turned in.



Visit the Recycling Center at manitowocountywi.gov/departments/recycling-center/electronics-collection/ or call 920-683-4333 to learn more about Christmas Light Recycling and similar programs offered in Manitowoc County.

COMPOST YOUR HOLIDAY TREE

Manitowoc County residents and businesses may drop off their natural holiday trees at the Basswood Compost Site. Remove all ornaments, tinsel, lights, stands and storage bags from trees before dropping off. If your tree is more than 6 feet long, please cut it in half. The Basswood compost site is located at 3000 Basswood Rd., near the intersection of CTY P and R. Please call 920-683-4333 or visit manitowocountywi.gov/.../yard-materials-drop-off/ for information.

According to the National Christmas Tree Association around 29 million natural trees are sold over the holidays. Many of these trees are recycled once their holiday usefulness is over. Used natural trees can be chipped and turned into wood mulch. Mulch is used for groundcover and erosion control in landscaping projects and trails. Another popular use is for constructing wildlife habitat. If properly placed in a backyard these holiday conifers provide shelter and protection for songbirds during the winter. Placed in loose piles at the edge of a woodland, these trees help many wildlife including birds, small mammals and even the animals that depend on them for food. Many sportsmen will construct these brush piles to attract small game or to create hunting blinds. Carefully placed piles on the ice in lakes can be used to create fish habitat once the ice melts and the trees sink to the bottom. Be sure to check for local restrictions and warnings about invasive organisms before building fish or wildlife structures.



Holiday trees may be taken for free from the Manitowoc County Basswood Compost Site during normal business hours. However, do not climb on the pile to remove trees.



TREE FOR A TREE PROGRAM The Manitowoc County Recycling Center is assisting the City of Manitowoc Parks and Forestry Division to distribute vouchers for their 'Tree for a Tree' Program. Throughout January, City of Manitowoc residents will be able to receive a voucher for a free deciduous tree when they bring their natural Christmas tree to the Basswood Compost Site. Participants must come to the Recycling Center Main Office, open Monday through Friday between 7am and 4pm, before dropping off their tree. Participants will need to complete and sign a form at the main office. Vouchers will be mailed to qualified City residents in March. There are a limited number of vouchers available on a first come, first serve basis with a limit of one per address to City of Manitowoc residents. Vouchers are redeemable at the Silver Creek Nursery from April 15 to May 15 for deciduous seedlings known as 'whips', which are about 3-4 feet tall, 2-4 years old, and ready for planting. The Tree for a Tree program is part of an urban forestry grant through the WDNR to help regain some of the urban tree canopy that will be lost due to the Emerald Ash Borer.

For more information visit manitowocountywi.gov/.../yard-materials-drop-off/

For information about the Tree for a Tree offer visit <https://www.manitowoc.org/DocumentCenter/View/30496/Tree-For-A-Tree-Flyer?bidid=>

NO LOGS OR STUMPS

The brush pile at the Basswood and Woodland Compost sites only accept brush and branches that are less than 6 inches in diameter and less than 5 feet long. This guideline is posted on the entrance sign, on our compost flyer, and on our website. Any resident, municipality, tree-removal or landscaping company discovered dumping this material off at a County-owned compost site will be contacted to remove it, and could be issued a citation.

If you are aware of our guidelines and follow them, thank you, we appreciate your efforts.

If you manage a company that uses the Manitowoc County Compost Sites, please familiarize your crew with our guidelines including what items are accepted and prohibited. We have noticed some dump-truck sized loads of brush have large logs or stumps that appear to be concealed in the piles and this practice needs to stop. Our complete guidelines are available online at <https://manitowocountywi.gov/departments/recycling-center/compost/yard-materials-drop-off/> and you can call our main office if you have questions about the material you want to bring in.

Large logs and stumps create a number of problems and drive up our operating costs.

Grinding brush and stumps takes significantly longer than grinding small diameter brush and branches, and grinding is a major expense for the compost sites, each grinding session can easily cost \$15,000 to \$25,000. The soil and rock compacted in the root balls around stumps can quickly dull and damage grinding equipment, especially if the stump contains larger granite rocks.

Branches longer than 5 feet long can become compressed and spring back into the wheel loaders used to push up the piles. When this happens it can damage the window glass on the cab or the hydraulic hoses and fittings behind the lift arms of the bucket or under the machine.

The equipment operators at the compost sites also need to spend extra time removing stumps and logs so the people who dropped them off can come and pick them up, and so other people do not see them in the pile and think that they can dump their logs/stumps there too. This takes time away from building and turning compost piles.

Brush and branches are banned from landfill disposal in Wisconsin, which is the main reason we handle them. Logs and stumps are not landfill banned. However, there are options for dealing with them besides illegally dumping them at the compost site and risking a citation. Logs are often used for firewood and some may even be accepted at sawmills for lumber or by farms or companies using them for heating. Stumps are often ground out with specialized stump grinders. If you are contracting a company to handle large trees on your property, consider asking about those options.



DRUG DISPOSAL PROGRAM RESULTS

Thanks to all those utilizing the county-wide drug disposal program, another record amount of medications were collected in 2022. A total of 2,111.3 pounds of medications were turned in. This included over the counter medications, dietary supplements, prescription medications and pet medications. It did not include pill bottles or packaging. Since the Drug disposal program started in 2006 we have collected 23,212 pounds of medications.

All the collected medications were sent to the Wisconsin Department of Justice's Drug Take Back Program. They reported collecting a total of 113,880 pounds of medications in Wisconsin this year. From the moment medications are turned in they are handled, stored, and transported by law officers until they are destroyed at a Hazardous Waste incinerator that is regulated by the United States Environmental Protection Agency. This type of regulated incineration uses high temperatures and pollution controls to safely incinerate these substances.

Unused medications present public health and safety concerns within the community. When flushed or thrown in the trash, pharmaceutical chemicals can show up in the water supply. Medications can also be involved in accidental poisonings, theft and drug abuse when improperly stored or handled.

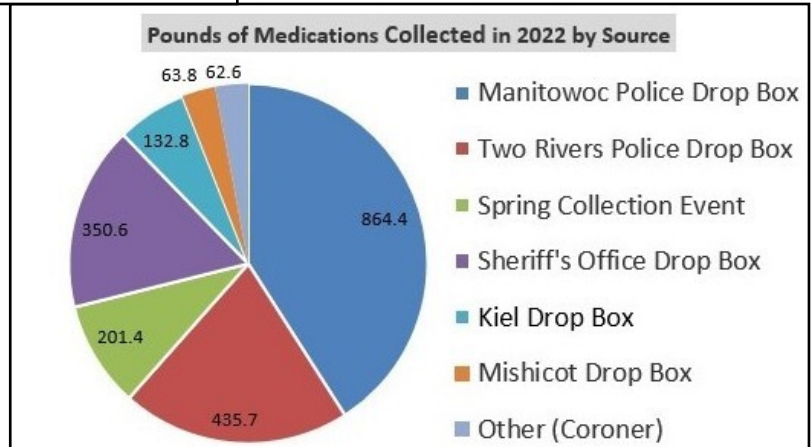
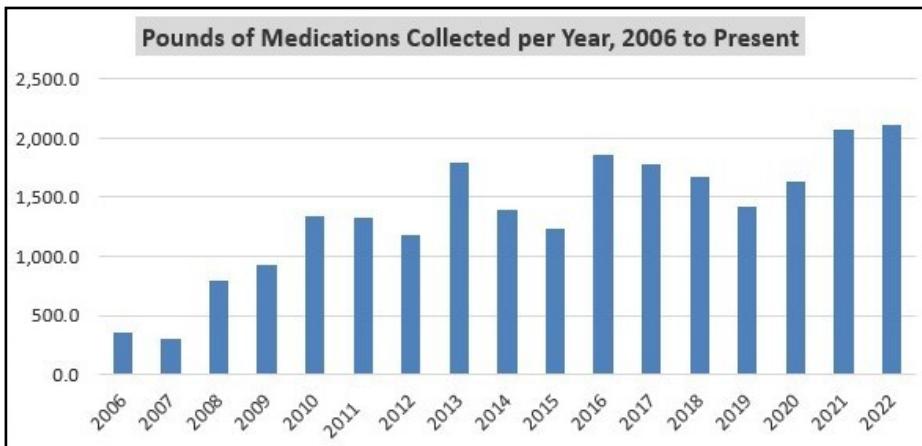
Permanent Dropbox Locations:

- Manitowoc County Sheriff's Office: 1025 South 9th St, Manitowoc, 8am—4:30pm M-F
- Manitowoc City Police Dept: 910 Jay Street, Manitowoc, 7:30am—4:30pm M-F
- Two Rivers Police Dept: 1717 East Park Street, Two Rivers, 8am—4:30pm M-F
- Mishicot Village Hall: 511 East Main Street, Mishicot, WI, open during [Village Hall](#) hours
- Kiel Police Dept: 619 Paine St, Kiel, open 7:30a-3p M-F

Directions:

Remove pills from original container and put them in a sealed "ziplock" style bag that is quart size or smaller before placing in the drug drop box. Empty pill containers may be placed in your home recycling or trash. Liquid, powder, and cream medications should remain in the original bottles with caps tightened. Accepted medications include over the counter, prescriptions, supplements, and pet medications. Never dump thermometers, sharps, or chemicals in a drop box.

Complete information on the Drug Disposal Program is available at manitowocountywi.gov/departments/recycling-center/drug-disposal/ or you can call the Recycling Center at 920-683-4333 if you have questions.



RECYCLING DEPOT

The Manitowoc Recycling Center maintains a residential drop off area at the Recycling Center Main Office located at 3000 Basswood Road. It is open Monday-Friday from 7am to 4pm, and Saturday from 8am to noon. This site is intended for use by all county residents. There is no trash or garbage drop off at this location. Contact a local hauler or the Ridgeview Landfill for disposal of trash. Different municipal drop off sites may be more accessible to you depending on the city, township or village you are from.

General Drop Site Guidelines

- Place your recyclables in the bunker or receptacle labeled for that material.
- Remove any plastic bags or strings and take them home with you to place in your trash.
- Do not place nonacceptable items in the bunkers or receptacles.
- Do not place materials outside receptacles on the ground.
- Large loads of cardboard, paper or plastic can be placed on appropriate pile on the tipping floor.
- Use caution driving through the drop site and on the tipping floor.
- Due to Covid-19, please practice social distancing and other precautions at the recycling depot.



The recycling and compost areas are monitored for illegal dumping, littering, and other issues. Please follow all posted guidelines.

Paper

Includes newspapers, junk mail, magazines, computer paper, books with metal or plastic binding removed etc.. Paper should be clean and dry. No paper contaminated with food or oil. No paper coated with foil, plastic or heavy glue. No plastic/foil wrapping paper.



Plastic

Check for a neck. **We only accept #1 and #2 bottles and jars.** Bottles and jars should be empty. No tub shaped containers or bottles that contained oil or pesticide (even if rinsed). No plastic wraps, films, bags, trays, pails, packaging peanuts, Styrofoam, or any other non bottle shaped item. Please do not tie milk jugs together or tie in plastic bags.



Glass Bottles

Any color glass bottle or jar can be recycled. Put into designated bunker. Remove lids or caps and rinse. No window glass, mirrors, light bulbs, clay, ceramics, drinking glasses or ovenware.



Cartons

Cartons include shelf stable and refrigerated containers for wine, milk, juice, cream, soy milk, soup, and egg substitutes. Drop off cartons with the plastic bottles. They should be emptied and flattened.



Cardboard

Should be clean and flattened. No soiled cardboard or cardboard coated with wax, tin, or plastic.



Cans

Tin, steel, and aluminum cans. Coated cans, foil, and pie tins are ok. Empty and rinse out food residue.



ELECTRONIC NEWSLETTER REQUEST

Are you interested in receiving current updates recycling programs in Manitowoc County? Join our electronic mailing list to receive our quarterly newsletter. Either call us at 920-683-4333 or email jonreisenbuechler@manitowoccountywi.gov and request to be added to our email distribution list. The recycling center will not give away or sell your information. You will receive our quarterly newsletter detailing news and information about the recycling center and related events.

SCRAP METAL DUMPSTER

The Recycling Depot now has a scrap metal dumpster available for your convenience. It is for clean scrap metal only, including steel, iron, copper, sheet/cast aluminum, tin, and mixed metals. Please remove excessive non-metal components.

- NO propane (or other) tanks
- NO electronics or appliances
- NO batteries or lamps
- NO garbage, plastic, wood, or rubber
- NO chemicals, gas, oil, or other hazardous wastes.



The Manitowoc County Recycling Center is operated by Ascend Services Inc. Formerly Holiday House of Manitowoc Inc.



The Manitowoc County Recycling Center is a business unit of the Manitowoc County Department of Public Works.

