



Office of the City Manager
1717 East Park Street
Post Office Box 87
Two Rivers WI 54241-0087
Telephone 920/793-5532
FAX. 920/793-5563

January 12, 2012

FOR IMMEDIATE RELEASE

WisDOT Harbor Assistance Program Grant to Fund Two Rivers Harbor Dredging

\$1.6 million Grant to Fund 80 Percent of \$2 Million Project

Wisconsin Governor Scott Walker today announced a grant award of \$1,630,950 to the City of Two Rivers, through the Department of Transportation's Harbor Assistance Program. (See attached DOT press release).

The grant will fund 80 percent of the cost of dredging the City's inner harbor, on the East Twin River from just downriver of the 17th Street Bridge to the 22nd Street Bridge. This area was last dredged in 1980. Over the ensuing 30-plus years, sediments have filled the Federal Channel, reducing its depth to as little as 3 feet in some areas.

The planned project will involve dredging the 100 foot wide Federal Channel, for the full length of this 1,500 foot stretch of the East Twin. The channel will be restored to its official project depth of ten feet.

In addition, the river will be dredged to a depth of six feet from the channel to the east bank in areas adjacent to Rogers Street Fishing Village and the docking areas for the commercial fishing fleet.

A total of nearly 63,000 cubic yards of material will be removed from the river, for placement at an upland disposal site. The City anticipates meeting most of its 20 percent local match requirement of \$416,500 by providing the disposal site for this material.

Channel Vital to Commercial Fishing Operations

This dredging will allow the continued operation of Two Rivers commercial fishing operations, located along the East Twin River upstream of 17th Street. The Susie Q Fish Company operates three commercial fishing tugs, a processing plant and retail store, with

employment totaling 20 people. Other commercial fishing operations bring total employment to over 30.

Harbor is the Centerpiece for Redevelopment

Commenting on the grant award, City Manager Greg Buckley noted, “Two Rivers grew up along these rivers. Access to Lake Michigan was vital. Fishing and water-borne commerce fueled the early growth of our city, and the Coast Guard, commercial fishing and sport fishing remain important parts of our economy today. This investment in our harbor and waterfront infrastructure, like past investments in rebuilding the Lake Michigan piers and the \$14 million 17th Street Bridge replacement project now underway, assure that the rivers and Lake Michigan will continue to play a big role in our future.”

Such maintenance work in the city’s inner harbor is part of a larger plan to redevelop Two Rivers’ downtown waterfront. “Having a viable, navigable harbor increases the likelihood that the former Eggers Industries site and the soon-to-be-vacated Thermo Fisher wood plant site—located right downtown, right on the harbor--will be successfully redeveloped. Those sites are hugely important to the future of Two Rivers,” Buckley commented.

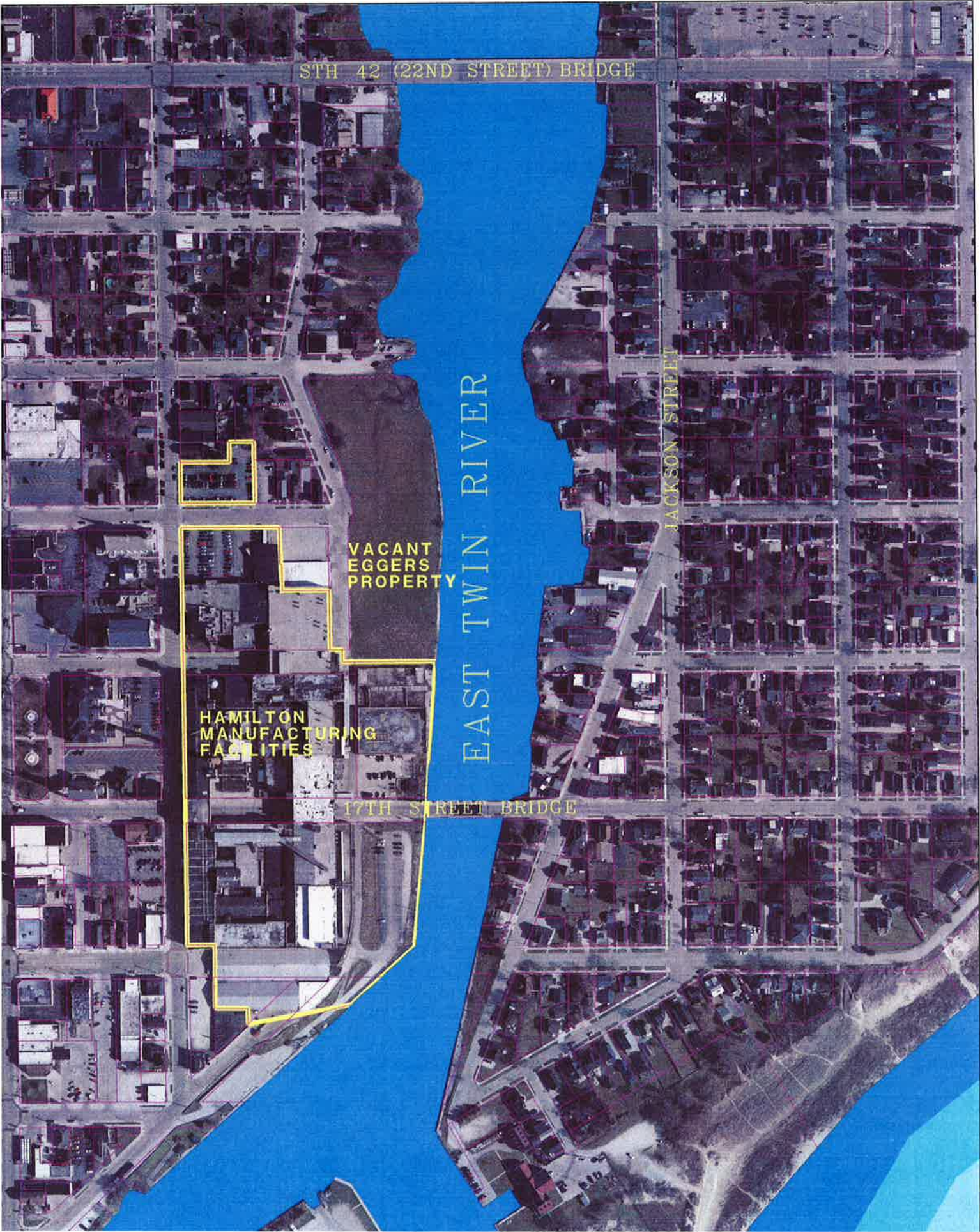
The City is beginning work on a Harbor Master Plan, to identify and prioritize other harbor infrastructure work and identify opportunities for transient docking and recreational boating development. Grants from the Wisconsin Economic Development Corporation and Wisconsin’s Coastal Management Program are assisting that effort.

Work Follows Outer Harbor Dredging in 2009

The City’s outer harbor, from the pierheads on Lake Michigan and up the East Twin River to 17th Street, was dredged with funding through a \$754,000 Federal earmark in 2009. The outer harbor is prone to shoaling, with accumulations of sand from the lakebed filling the channel and the area of confluence of the East and West Twin Rivers. The upper channel, in contrast, tends to fill with silty sediments from upstream runoff.

The City hopes to complete the dredging project in 2012, to coincide with construction work on the new 17th Street bridge, slated for completion in mid-2013.

For more information, contact Two Rivers City Manager Greg Buckley at 920-793-5532, or e-mail grebuc@two-rivers.org.



STH 42 (22ND STREET) BRIDGE

EAST TWIN RIVER

JACKSON STREET

VACANT
EGGERS
PROPERTY

HAMILTON
MANUFACTURING
FACILITIES

17TH STREET BRIDGE

News
Events
Fast facts
Newsletters

Governor Walker approves \$6.8 million in harbor grants

January 12, 2012

Governor Scott Walker has approved grants totaling \$6,805,219 for three harbor projects in Wisconsin. The funds will be used to dredge and make repairs and improvements to docks in Milwaukee, Superior and Two Rivers. The State's Harbor Assistance Program provides 80 percent of the needed funds, with the grant recipients providing a required 20 percent match.

"Wisconsin's commercial ports move more than 40 million tons of cargo, worth more than \$8 billion each year," said Governor Walker. "In addition, 9,550 jobs are dependent on the success of the state's waterborne commerce."

The three projects in this grant cycle include:

- City of Milwaukee – \$1,842,000 to Edward E. Gillen Company for the Gillen Marine Terminal, where cargo deliveries of more than 160,000 tons of steel and 2,000 tons of stone by truck or rail will be exported on barges for coastal construction projects on Lake Michigan. Phase one of the project will complete and improve the former Grand Trunk Car Ferry Terminal dockwall for cargo transshipments by restoring and extending the dockwall to accommodate barges. Phase two of the project will remove dockwall navigation hazards that resulted from deterioration after car ferry service discontinued in 1978. Phase two will also include dredging of the channel to 20 feet and the main slip to 18 feet. Phase three will include improvements for secure receiving and storage of cargo. Phase four will include further expansion and dredging to allow access to the existing fire slip. The Port of Milwaukee owns the project area, which is leased to Gillen. The project improvements allow Gillen to maintain and expand its business in Wisconsin and preserve 150 to 200 jobs.
- City of Superior – \$3,332,269 to Hallett Dock Company to dredge 1,500 feet of vessel slip and to install sheet piling for 1,245 feet of adjacent dockwall at Dock 8 in Superior. Presently, 1,500 feet of the channel is at a depth of 22 to 24 feet, which limits fully loaded vessels from delivering cargoes to the northern third of the dock surface. The entire project area will be dredged to full navigational draft of 28 feet, thereby matching the 28 feet depth of both the harbor

navigational channel, the Saint Lawrence Seaway and the Soo Locks on the eastern end of Lake Superior. The area is used to receive, store, screen and ship more than 80,000 tons of limestone for the sugar beet industry, 180,000 tons of road salt, 600,000 tons of limestone aggregate and 7,400 gallons of calcium chloride annually. This award allows Hallett to continue its commitment to restoring Dock 8. Hallett has spent \$4,300,000 in the last seven years on dock repairs in infrastructure and equipment on Dock 8, which had been inactive for 35 years prior to Hallett's improvements.

- City of Two Rivers – \$1,630,950 to dredge Two Rivers Harbor between the 17th Street Bridge and the 22nd Street Bridge. Increasing the depth of the Federal Channel from an average of 6.3 feet to 10 feet will reduce navigational hazards for the commercial fishing fleet harbored in Two Rivers. Additional dredging near the docking facilities will allow adequate draft for vessels leaving the channel to reach their place of docking. The fleet is responsible for catching more than 276 tons of chub, whitefish and smelt annually, creating \$4 million in economic impacts to the City of Two Rivers and at least 50 jobs that are directly associated with the fleet and support enterprises in Two Rivers.

Created in 1979, Wisconsin's Harbor Assistance Program helps harbor communities maintain and improve waterborne commerce. Projects typically involve dock reconstruction, mooring structure replacement, dredging and the construction of facilities to hold dredged material. Since the program began, the Wisconsin Department of Transportation (WisDOT) has administered more than \$73.36 million in matching funds for more than seventy port preservation and improvement projects. Successful projects must pass a rigorous cost/benefit analysis and must receive favorable recommendations from the state Harbor Advisory Council and the WisDOT Secretary.

The next round of Harbor Assistance Program grant applications is due February 1, 2012. Approximately \$6.6 million is available for harbor communities along the Great Lakes and Mississippi River to maintain and improve waterborne commerce.

The grant application form is available online at the [WisDOT Web site](#).

For more information, contact:

Sheri Walz, WisDOT Bureau of Transit, Local Roads, Railroads and Harbors
(608) 267-9319, sheria.walz@dot.wi.gov